

Array[®]
SOLID SURFACE SHOWER SYSTEMS

HIGH QUALITY. LOW COST. EXTREME VERSATILITY.

HEALTHCARE, ASSISTED LIVING & RETIREMENT | HOSPITALITY | GOVERNMENTAL | MULTI-RESIDENTIAL | SCHOOLS & COLLEGES
STUDENT & MILITARY HOUSING | CORRECTIONAL FACILITIES | INDUSTRIAL CREW LIVING QUARTERS | YACHT & MARINE MANUFACTURERS

Array®

SOLID SURFACE SHOWER SYSTEMS

As the distributor of Array Solid Surface Shower Systems, Maxstone International, LLC works directly with architects and designers, from conception to completion. We can color match, provide custom sizes and drain locations for a perfect fit on your shower system project.

We invite you to get inspired by the fashionable, fresh and inviting colors of Array Solid Surface. Array is your best choice for quality, versatility, hygienic characteristics, conformance and price. Certified by NSF,* this economical alternative to high-priced solid surface will fit neatly into your project budget with no loss of quality or design appeal.



Specify ARRAY® Solid Surfaces for Your Next Commercial or Institutional Project

Healthcare, Assisted Living, Hospitality, Student & Military Housing, Commercial, and Institutional Wet or Dry Areas

ARRAY® Solid Surface is used in many ways throughout facilities designed for healthcare, long-term care, assisted living, retirement and nursing homes, institutional and governmental projects. Some of these installations include:

- Patient rooms and baths
- Surgical operating room walls and countertops
- Pharmacy countertops
- Nursing stations and other work and reception area countertops
- Wainscots and wall cladding
- Window sills, door trim, base trim, pass-throughs and cased openings
- Restroom vanity tops, bowls, and toilet partitions for staff and public use
- Cafeteria serving and buffet counters, signage, displays, planters, and tables



Shown: ADA-compliant shower and vanity top.

Solid Surface Trim & Baseboard

-Shower Trim - 2" x 1/2" x 96" (with eased edges)

Special Order Only

- Inside Corner Trim - 1/2" x 1/2" x 96" quarter round

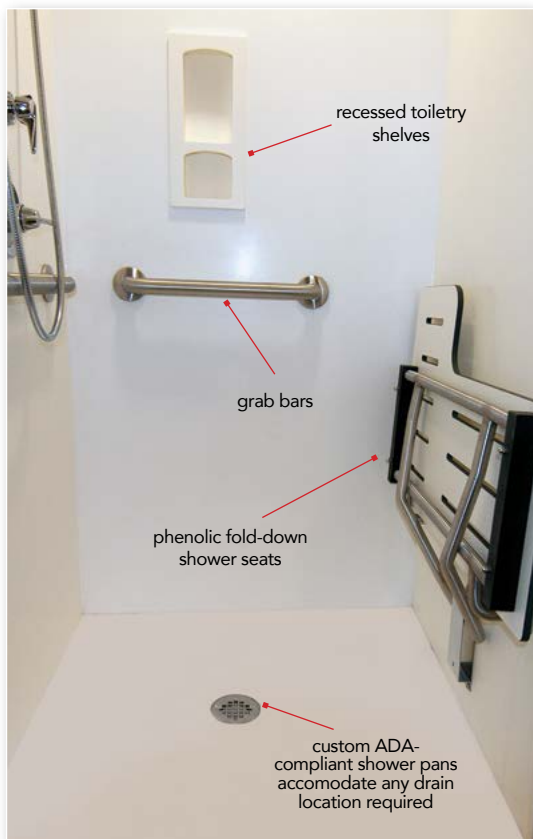
- Inside Corner Trim - 3/4" x 3/4" x 96"

- Outside Corner Trim - 1-1/2" x 1-1/2" x 96"

- Baseboard Trim - 4" x 1/2" x 96"

Specify ARRAY® Solid Surfaces for Your Next Commercial or Institutional Project

ARRAY® Solid Surface Wall Panels, Countertops, Vanity Bowls and Shower System Components and Accessories



- This solid surface material is a homogeneous, thermoset polymer compound that consists of acrylic and polyester components filled with aluminum tri-hydrate.
- Impact resistant wall panels are non-porous and have water-tight, inconspicuous, grout-free seams.
- Solid surface shower pans are available in standard or custom configurations, including ADA-compliant.
- These surfaces are extremely hygienic and easy to maintain,

plus they are renewable and resistant to mold, bacteria, mildew, scratching and heat.

- Wall panels are easy to fabricate, install, repair, and maintain, reducing costs and extending service life.
- Toilet partition panels 36"x72"x3/4" and 72"x72"x3/4"
- Integral solid surface vanity bowls, 4" covered backsplashes, and 4" aprons are available.



ADA Vanity Bowls



1512VO
15-1/2" x 12-5/8" x 3-1/2"
Deep Bowl with overflow



B06
17" x 14" x 5-1/4"
Deep Bowl with optional overflow



B08
19" x 15" x 5-3/4"
Deep Bowl with optional overflow

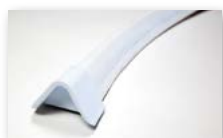


1812VO
18" x 12-3/4" x 5"
Deep Bowl with overflow

Accessories



CD0707
Corner Soap Dish



CWR
Collapsible Water Dam
42", 48", 66" length



BR182
Grab Bars - 18", 24",
30", 36", 42", 48"



PF140NC
Brass Shower Drain



Phenolic Fold-down
Shower Seat



RTS1214
Toiletry Shelf

HIGH QUALITY. LOW COST. EXTREME VERSATILITY.

Specify ARRAY® Solid Surfaces for Your Next Commercial or Institutional Project

ARRAY® Standard and Custom ADA Shower Pans and Vanities

ARRAY® custom shower pans (including ADA-compliant versions) are manufactured from acrylic solid surface material that is certified by NSF.*

Shower pan sizes and drain locations are based upon customer specifications. Both standard and trench drain configurations are offered. White and Bisque are stock colors. Other colors are available by special order for projects.

Shop drawings, installation assistance, and technical support are available at your request. ARRAY materials and technology help ensure ADA-compliance.



Standard Shower Pans

Custom sizes available



ADA3636
Solid Surface
Shower Pan



ADA3060
Solid Surface
Shower Pan



ADA3642TD
Solid Surface Shower
Pan with Trench Drain



ADA
Compliant Ramp



SP3260
Solid Surface Shower Pan
Left, Center or Right Drain



SP3636 & SP4242
Solid Surface
Shower Pan



**SP3636N &
SP4242N**
Solid Surface
Shower Pan



SP3648
Solid Surface Shower Pan

901.386.2375 | 1.877.778.1149 | www.arraysurfaces.com

ARRAY® solid surface - 16 standard colors plus color matching (1/4" & 1/2" thick)



SOLID SURFACE COMMERCIAL PROJECTS

Healthcare

ANTHC Fashion Housing, Anchorage, AK
 Birmingham Pain Center, Birmingham, AL
 Sunshine Gardens Assisted Living, Durango, CO
 Evenings Porch Assisted Living, Bayfield, CO
 Atlanta Prosthetics & Orthotics, Atlanta, GA
 Kalakaua Gardens, Honolulu, HI
 Wishard Hospital, Indianapolis, IN
 Kansas Masonic Home, Wichita, KS
 Worcester Behavioral Innovations, Worcester, MA
 Sanderson Farms Wellness Center, Jackson, MS
 Baptist Memorial Hospital, Southaven, MS
 Horizon Young Adult Facility, Buffalo, NY
 Horizon Health Services, Horizon Village, Sanborn, NY
 Avita Health Care, OH
 Ardmore Veterans Center, Ardmore, OK
 St. Francis Hospital, Tulsa, OK
 Crockett Senior Center, Alamo, TN
 St. Francis Hospital, Bartlett, TN
 Methodist Le Bonheur Hospital, Germantown, TN
 Village of Germantown, Germantown, TN
 Baptist Memorial Hospital, Pediatric Bldg, Memphis, TN
 St Jude Hospital, KRCC building, Memphis, TN
 Vanderbilt University Medical Center, Nashville, TN
 VA Hospital Dallas Transitional House, Dallas, TX
 The Hospital of Providence, El Paso, TX
 Sierra Providence Hospital, El Paso, TX
 Silverado Senior Living, Irving, TX
 Valley Baptist Hospital, Harlingen, TX
 Baptist Assisted Living Facility, San Angelo, TX
 Clear Lake Regional Medical Center, Webster, TX

Education

Auburn University — Equestrian Ctr, Auburn, AL
 U of Arkansas - Tri-Delta Sorority, Fayetteville, AR
 Colorado Mt. College, Glenwood Springs, CO
 Colorado State University, Fort Collins, CO
 Bradley University, Williams Hall, Peoria, IL

Lincoln's Challenge Academy, Rantoul, IL
 Prussing School, Chicago, IL
 Loyola University, New Orleans, LA
 St Mary's College of Maryland, St Mary's City, MD
 UNC Asheville, Founders Hall, Asheville, NC
 Ramapo College, Mahwah, NJ
 William Patterson University, Wayne, NJ
 Mid-Del Schools, Midwest City, OK
 UT Knoxville, Sorority Housing, Knoxville, TN
 University of Memphis, Student Housing, Memphis, TN
 Lemoyne Owen College, Memphis, TN
 Denver Elementary School, Memphis, TN
 Rhodes College, Memphis, TN
 Wells Station Elementary School, Memphis, TN
 Christian Brothers University, Memphis, TN
 Baylor University Martin Hall, Waco, TX
 Balko Public School, Balko, OK
 University of Utah, Salt Lake City, UT

Hospitality & Multi-family Housing

The Springs at William Centre, Tucson, AZ
 Sedona Real Inn & Suites, Sedona, AZ
 La Quinta Inn, Miami, FL
 La Quinta Inn, Atlanta, GA
 Saugus Housing Authority, Saugus, MA
 Dedham Housing Authority, Dedham, MA
 Westford Housing Authority, Westford, MA
 Richton Housing Authority, Richton, MS
 Morganton Housing Authority, Morganton, NC
 Holiday Inn Express, Pittsburg, PA
 Ripley Housing Authority, Ripley, TN
 Stratford Apartment, Memphis, TN
 St Jude Target House II, Memphis, TN
 The Guesthouse at Graceland, Memphis, TN
 Clarion Hotels, Memphis, TN
 Inn at Ft. Bliss, Ft. Bliss, TX

Others

AAIDT Aviation Training Center, Brookley Aeroplex, AL
 DHS Faith Wing, Anniston, AL
 Crichton Fire Station, Mobile, AL
 Indian River Coast Guard Station, Rehoboth Beach, DE
 Florida Power & Light, FL
 Miami Airport, Toilet Partitions, Miami, FL
 US Coast Guard BMB Range, Miami Beach, FL
 FPL Locker Room/ Shower Project, FL
 Aim South Logistic, Fernandina Beach, FL
 Phillips Fire Station #3, Atlanta, GA
 SNF Flopan Maintenance, Plaquemine, LA
 Shell Stallion Offshore Quarters, Abbeville, LA
 Oxford Fire Station, Oxford, MS
 Horizon Young Adult Facility, Buffalo, NY
 Seth Wadley Ford Dealership, Paul's Valley, OK
 Safenet Women's Shelter, Claremore, OK
 Unit Corporation Headquarter, Tulsa, OK
 Stillwater Christian Church, Stillwater, PA
 Bernhart Crane, Memphis, TN
 Memphis Fire Dept, Training Center, Memphis, TN
 High Point Church, Memphis, TN
 Clarksville Fire Station, Clarksville, TN
 Corrigan OSB Admin. Building, Corrigan, TX
 El Paso Fire station #5, El Paso, TX
 Sea Scouts Base, Galveston, TX
 Doggett John Deere Industries, Houston, TX
 Lewisville Fire Station #2 & 6, Lewisville, TX
 San Angelo Performing Arts Center, San Angelo, TX
 Roy Maas Shelter, San Antonio, TX
 Fisher County LEC, Roby, TX
 Victoria Fire Station #6, Victoria, TX



BEAUTIFUL. AFFORDABLE. VERSATILE.

901.386.2375 | TOLL FREE 1.877.778.1149 | FAX 901.386.6668 | customer@arraysurfaces.com | www.arraysurfaces.com
 Maxstone International, LLC | 7401 Adrienne Place | Bartlett, TN 38133